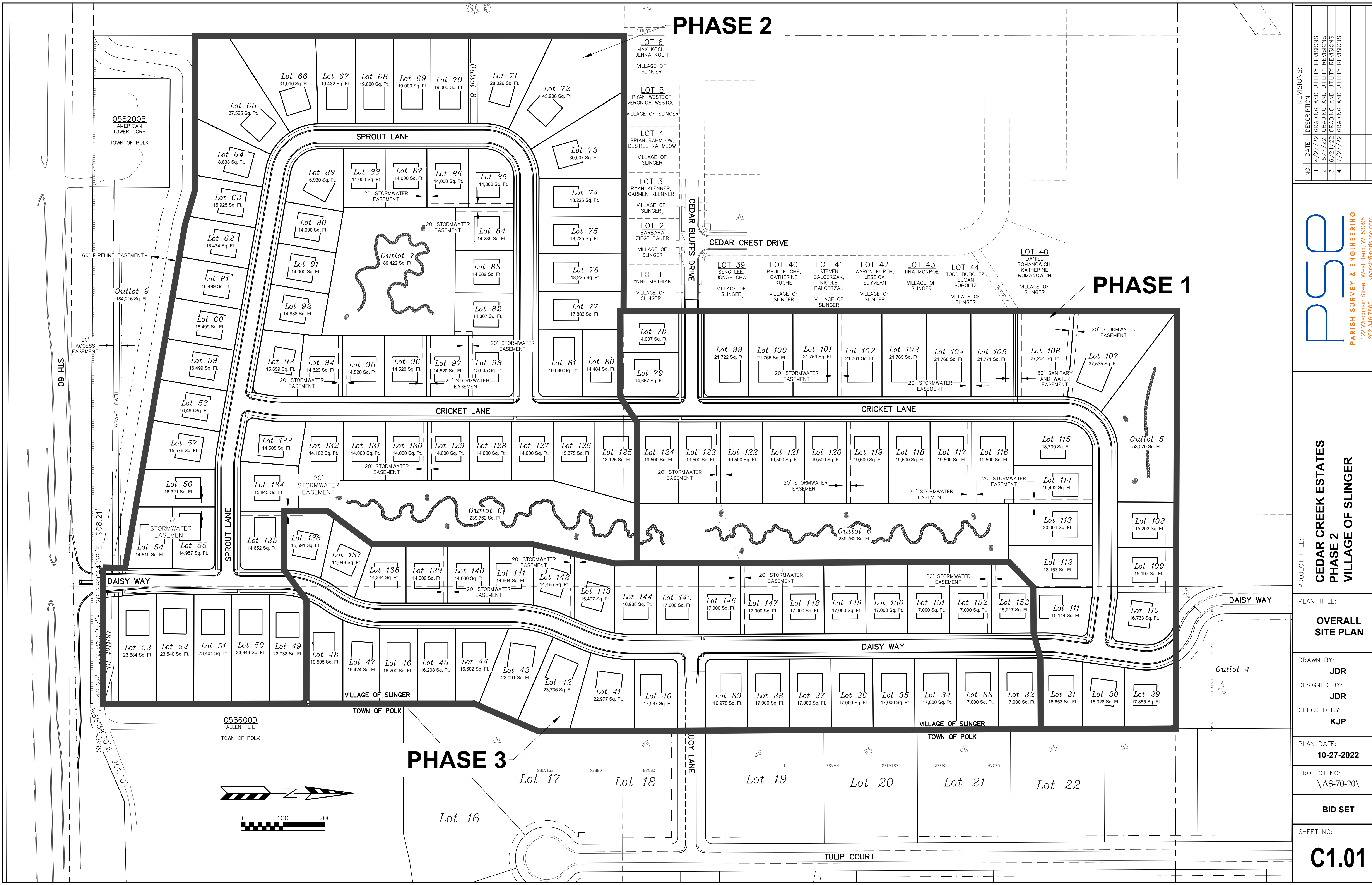


PHASE 2

PHASE 1

PHASE 3



NO.	DATE	DESCRIPTION
1	4/27/22	GRADING AND UTILITY REVISIONS
2	6/7/22	GRADING AND UTILITY REVISIONS
3	6/24/22	GRADING AND UTILITY REVISIONS
4	7/27/22	GRADING AND UTILITY REVISIONS

PSE
 PARISH SURVEY & ENGINEERING
 122 Wisconsin Street, West Bend, WI 53095
 262.346.7600
 kparish@parishse.com

PROJECT TITLE:
**CEDAR CREEK ESTATES
 PHASE 2
 VILLAGE OF SLINGER**

PLAN TITLE:
**OVERALL
 SITE PLAN**

DRAWN BY:
JDR
 DESIGNED BY:
JDR
 CHECKED BY:
KJP

PLAN DATE:
10-27-2022

PROJECT NO:
 \AS-70-20\

BID SET

SHEET NO:

C1.01